



## Scoring & Timing Solution for Netball



## 1. Introduction

This is a professional solution for LED scoreboard display in Netball stadiums.

Mainly for large-scale Netball matches which held in professional sports venues.

The system functions conform to IFNA rules.

Match arrangement, real-time scoring & timing display, players' & referees' info display, rank statistics export & print, and advertising display can be realized through the coordination of Match Scoring System, Meet Management System, etc.

It is an ideal choice for most of smart and professional stadiums.

### 1.1 System Architecture

The whole system is composed of several subsystems, including: Match Scoring System and Meet Management System.

Each subsystem can not only work independently, but also work together to share the data.

It is flexible for customers to configure according to the actual application.

- **Match Scoring System**

Match Scoring System named ULTRA SCORE is composed of Ultra Score Software, Ultra Score Console, etc.

It is mainly operated by the referees to realize the scoring and timing work and real-time scoreboard display.

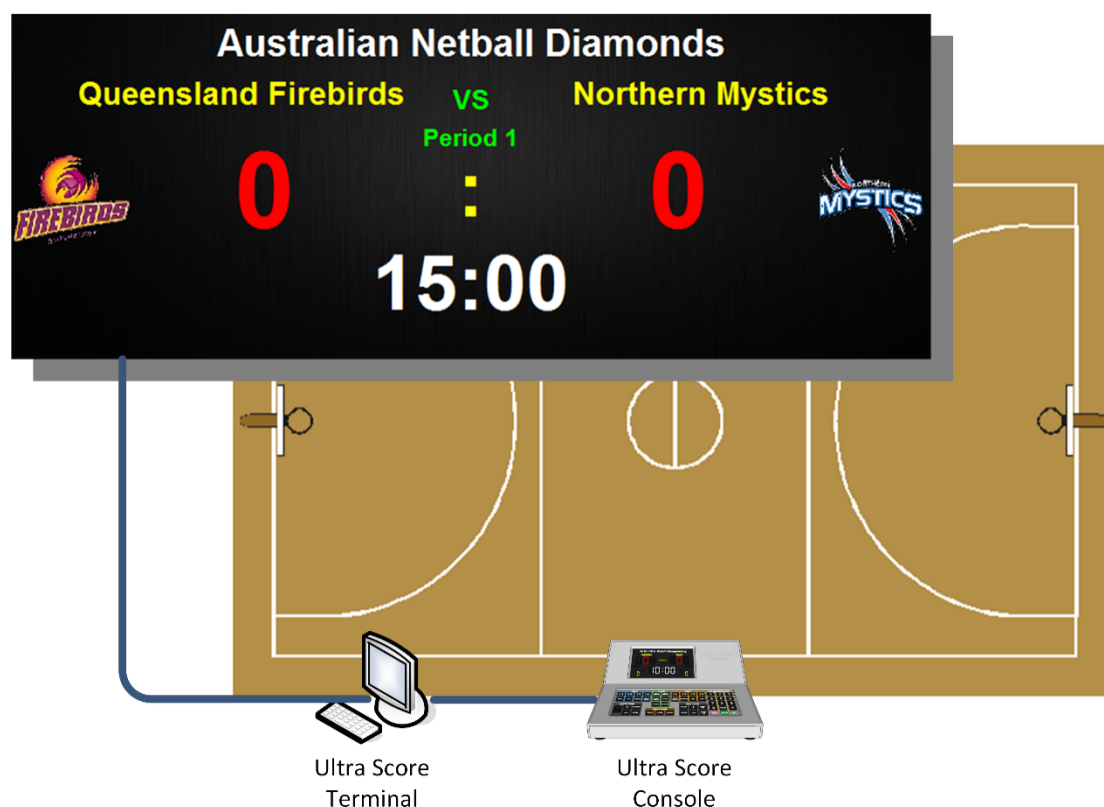
The system functions conform to IFNA rules.

- **Meet Management System**

It is composed of Meet Management Server, On-Venue Results Workstation, Printer, etc.

Linking with Online Registration System and Match Scoring System, it can realize: participants management, match schedule, result management, technical statistics, court arrangement, rank statistics, etc.

## 1.2 System Chart



### System Structure Description

- 1) **LAN:** A LAN is set up in the stadium. Connect the LED control PC, Ultra Score Terminal PC, Match Scoring & Timing Host, Referee Scoring & Timing Terminal, Football Stats Workstation, Meet Management Server, On-Venue Results Workstation and Printer to the LAN.
- 2) **LED Screen:** One or two LED screens are controlled by separate computers which connect with LED sending cards. Both of the LED screens can show the same contents or different contents as required.
- 3) **Ultra Score Console:** Installed in the Officials Table for referee's operation of score and penalty. It can be connected to the LAN through network cable or WIFI.
- 4) **Meet Management Server:** It is the core data processing equipment which is installed in the Technical Table and connected to the LAN by network cable.

## 2. Specification for products

### 2.1 Ultra Score Software

Products	Details
Standalone edition	<ul style="list-style-type: none"><li>◆ Installed on one PC.</li><li>◆ Supports: Netball</li><li>◆ English version</li><li>◆ Including 1 dongle</li></ul>
Standard network edition	<ul style="list-style-type: none"><li>◆ Terminal + 1 Display</li><li>◆ Supports: Netball</li><li>◆ English version</li><li>◆ Including 1 dongle</li></ul>
Professional network edition	<ul style="list-style-type: none"><li>◆ Terminal + Referee + 2 Display</li><li>◆ Supports: Netball</li><li>◆ English version</li><li>◆ Including 1 dongle</li></ul>

#### **Difference:**

##### **Standalone Edition:**

Match management, Scoring, and Media display functions, all in one installed on a PC. Referee must do operation on the PC for display directly.

It is suitable for the stadium where has just one screen, which doesn't have strict needs of the scoring and timing accuracy.

##### **Network Standard Edition:**

Score terminal and media player functions can be installed on 2 PCs respectively. So that one independent PC can be setup on the courtside special for referee's operation, the other PC running as media player to manage the LED display.

It is suitable for the stadium where has one screen, needs to do the scoring and timing on the courtside.

##### **Network Professional Edition:**

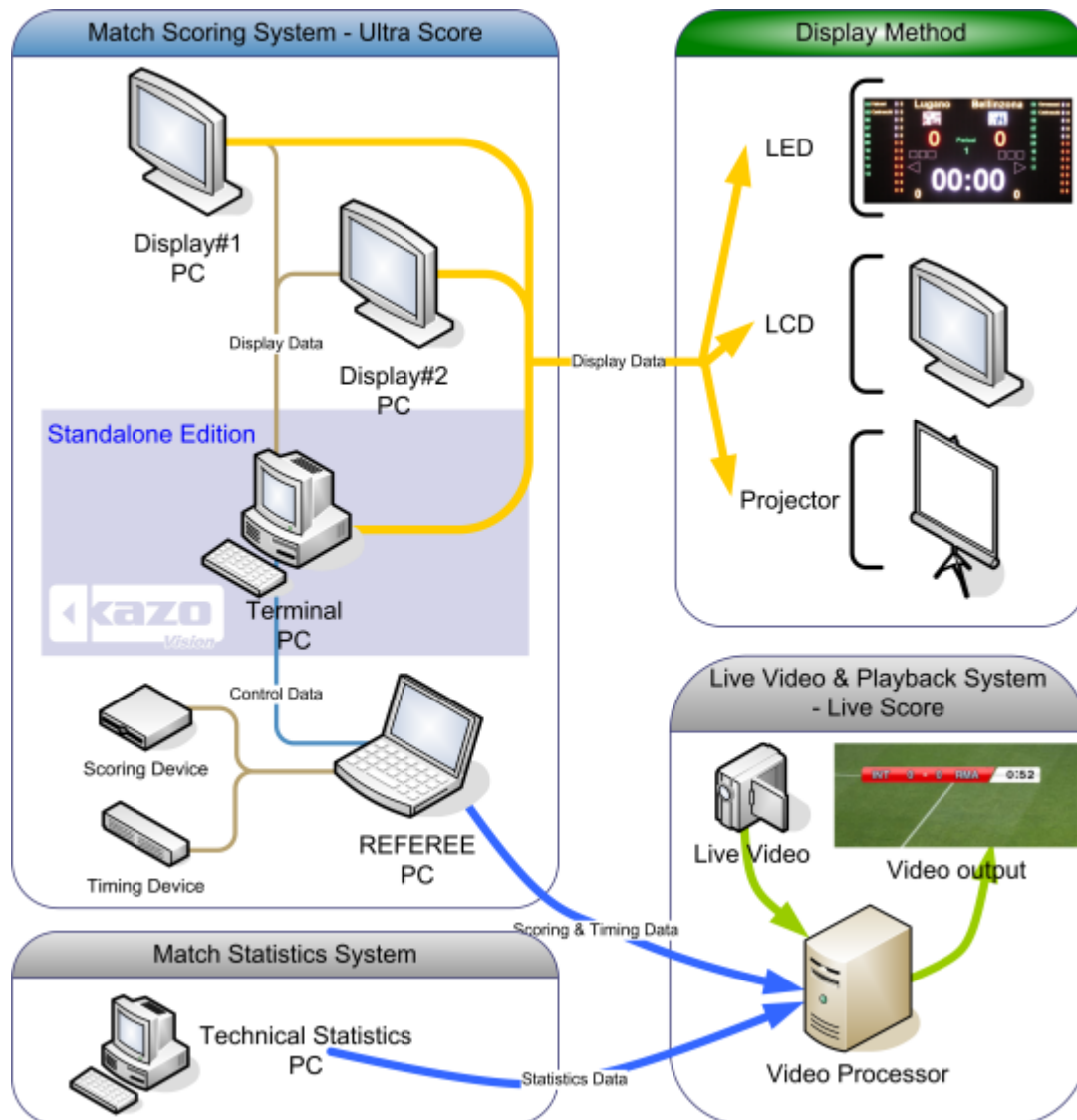
Except the function of score terminal, 1-3 media players can be equipped on PCs separately, in order to display different contents on several LED screens.

It is suitable for the stadium where has more than 2 screens where referee need to do scoring on the courtside and LED screens need to display different contents separately. (For example, one LED screen is for scoreboard and another is for advertising or player info).





**System Diagram:**



## Features

- (1) Professional scoreboard display: Scoring and timing operation, layout of scoreboard can meet international game rules.
- (2) Match management: Information of match, team, team members and coaches can be saved in advance. And referee's scoring operation during the match can be recorded and output.
- (3) Scoring functions: Include operation and display of teams and players' point, foul and substitutions.
- (4) Timing functions: Include operation and display of game time, pause, break time, count down time and system time.
- (5) Convenient operation feeling: Referees can do operation on a special score console as well as by using shortcuts on the keyboard.
- (6) Powerful media player: Kinds of media formats are supported. It is easy to switch between the scoreboard and video.
- (7) Notification: Rolling to display short notice on the screen which allows to set the speed, colors, fonts freely.
- (8) Customization: All contents on the scoreboard including fonts, color and layout can be modified to meet clients' needs.
- (9) Self-adaptation: With easy configuration, score information can be displayed on kinds of LED and LCD screen by using this system which can adjust the layout to meet any sizes of screen.
- (10) Security: Auto backup function will help you recover the match immediately from the computer fault.

## 2.2 Wire / Wireless Score Console

Item	Details
Wire/Wireless score console	<p>Type: KS-GC16    Size: 330x290x140(mm)</p> <ul style="list-style-type: none"> <li>◆ Used with the Ultra score software</li> <li>◆ Communication: 1*Ethernet, 1*WIFI</li> <li>◆ With 7" full color LCD screen</li> <li>◆ Material: Plastic</li> <li>◆ Support: Netball</li> <li>◆ Functions: Scoring, timing, giving a point to team member, foul, switching between ads and scoreboard etc.</li> </ul>





### 2.3 Meet Management Server

Products	Details
<b>Meet Management Server</b>	<p>Type: KS-MMS-MINI</p> <p>Size: 170x150x35 (mm)</p> <p>Weight: 1.0 KG</p> <p>Features:</p> <ul style="list-style-type: none"><li>● Multi-court arrangement, auto generate the order form.</li><li>● Multi-project arrangement, make the schedule more smoothly.</li><li>● Monitor the status of each court in real time, including the current field, rotation and player info.</li><li>● Court adjustment, can manually modify the match court and session info.</li><li>● Summary and print integrated report.</li></ul>

